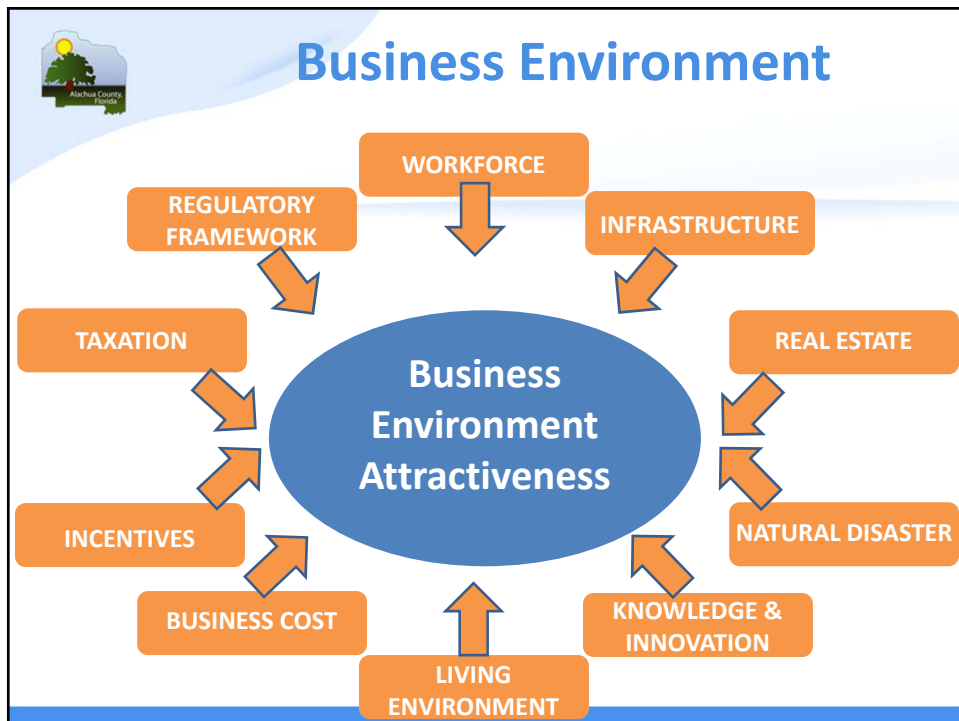
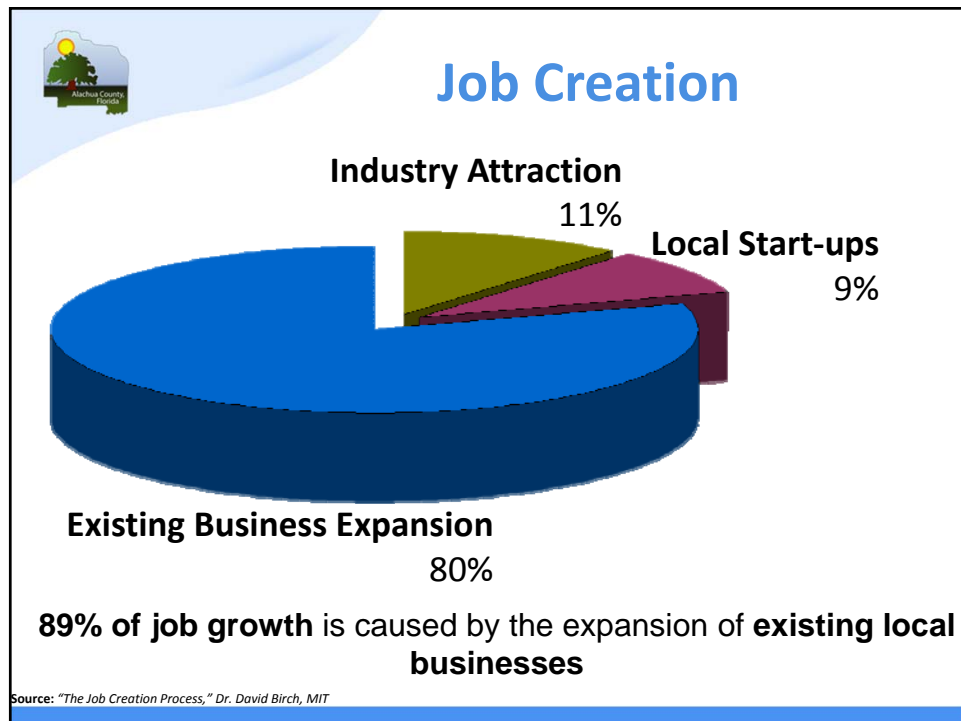
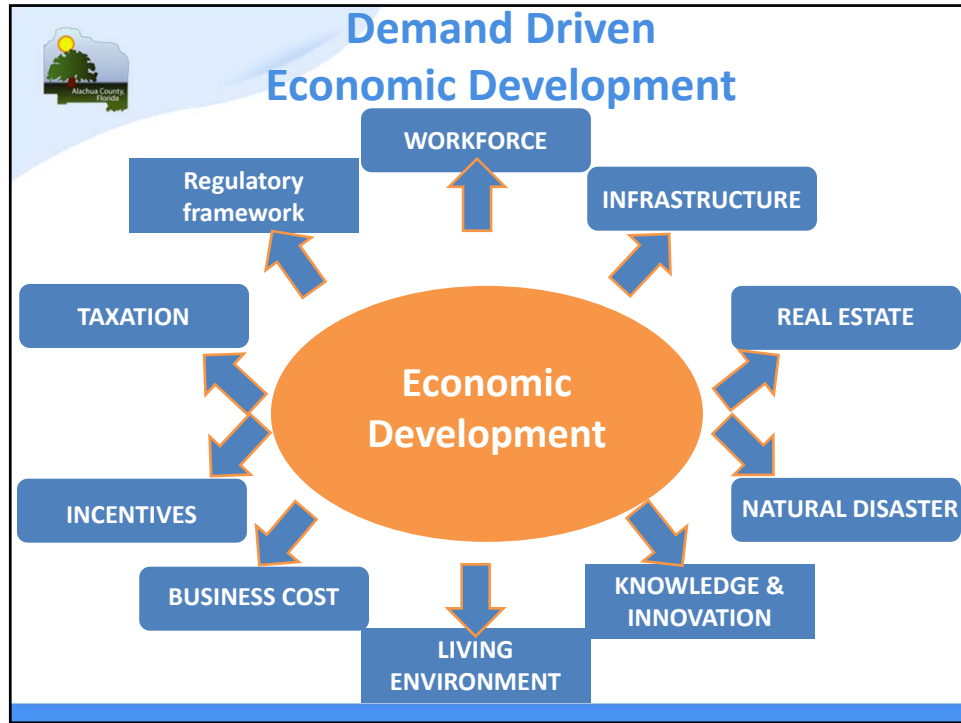


2017 Citizen Academy Economic Development Spring 2017

Edgar Campa-Palafox
Economic Development Coordinator





Line chart showing the percentage of the population aged 65 and over from Jan00 to Sept16 for Gainesville MSA, Florida, and the U.S. The chart shows a general upward trend for all three, with a significant peak around 2010. The Gainesville MSA peaks at approximately 8.3%, Florida at 11.2%, and the U.S. at 10.0%.

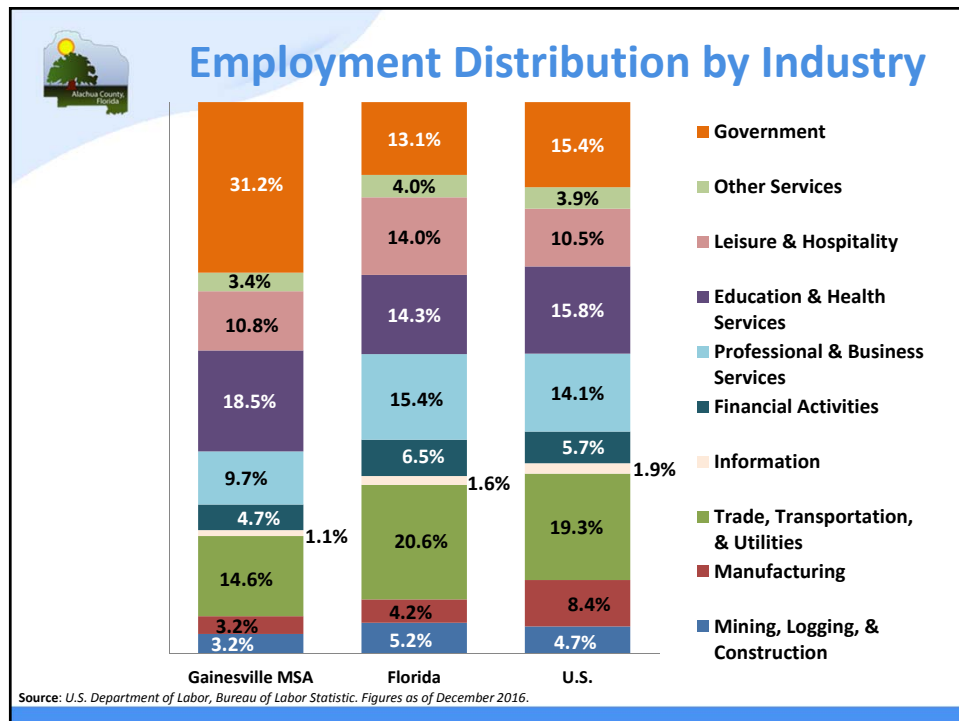
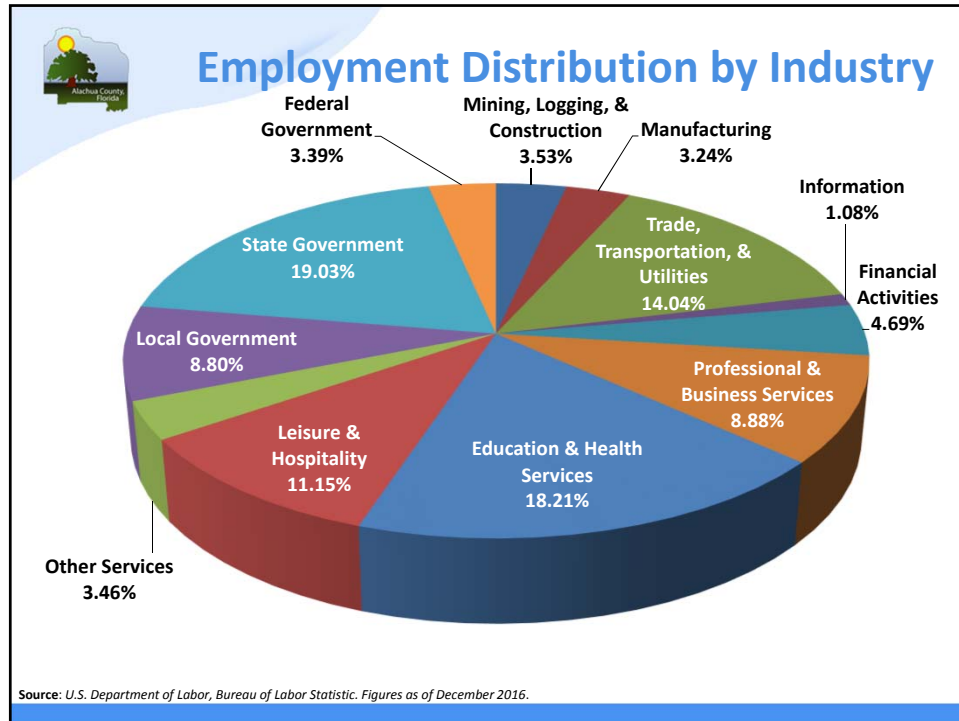
Year	Gainesville MSA (%)	Florida (%)	U.S. (%)
Jan00	3.1	3.8	4.1
Jun00	3.1	3.8	4.1
Nov00	3.0	3.8	4.1
Apr01	3.1	3.9	4.2
Sep01	4.5	5.8	5.8
Feb02	4.0	5.8	5.8
Jul02	4.0	5.5	5.8
Dec02	3.9	5.3	6.0
May03	3.8	5.3	6.2
Oct03	3.8	5.0	5.8
Mar04	3.7	4.8	5.5
Aug04	3.7	4.5	5.3
Jan05	3.5	4.2	5.1
Jun05	3.0	3.8	4.8
Nov05	2.8	3.5	4.5
Apr06	2.8	3.2	4.5
Sep06	2.8	3.2	4.5
Feb07	2.9	3.8	4.8
Jul07	3.0	4.5	5.0
Dec07	3.5	5.5	5.5
May08	5.0	7.5	6.5
Oct08	6.0	9.5	8.5
Mar09	7.0	10.5	9.5
Aug09	7.8	11.0	10.0
Jan10	8.3	11.2	10.0
Jun10	8.0	11.0	9.5
Nov10	8.0	10.8	9.0
Apr11	7.8	10.5	9.0
Sep11	7.5	10.0	8.5
Feb12	7.0	9.5	8.2
Jul12	6.5	9.0	8.0
Dec12	6.0	8.5	7.8
May13	5.5	8.0	7.5
Oct13	5.2	7.5	7.2
Mar14	5.0	7.0	6.8
Aug14	4.8	6.5	6.5
Jan15	4.5	6.0	6.2
Jun15	4.2	5.5	5.8
Nov15	4.0	5.2	5.5
Apr16	4.2	5.0	5.2
Sept16	4.4	4.7	4.9

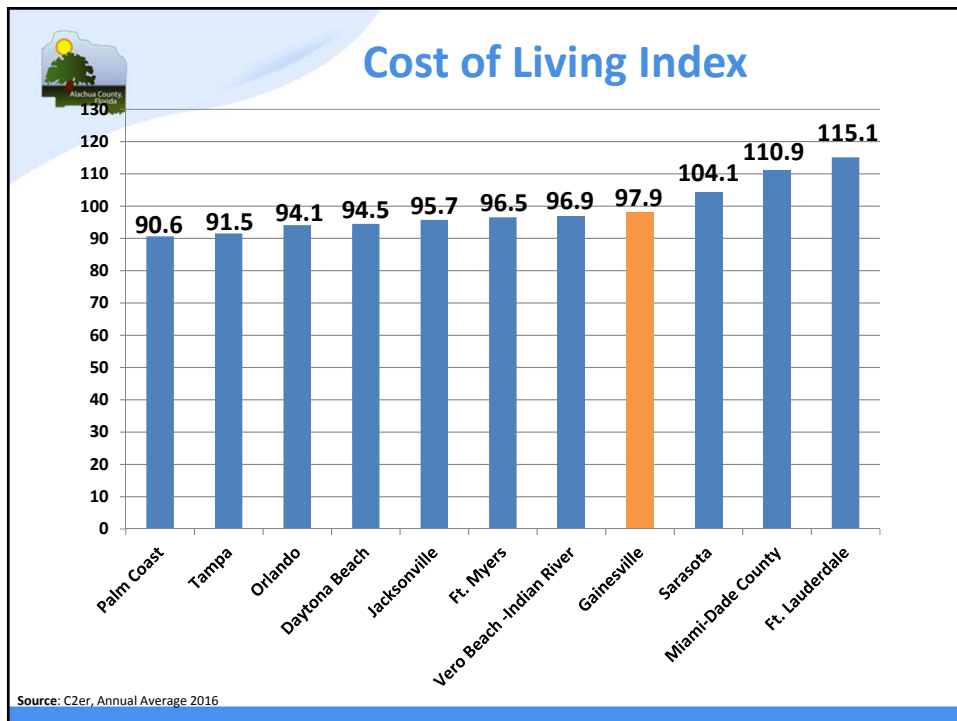
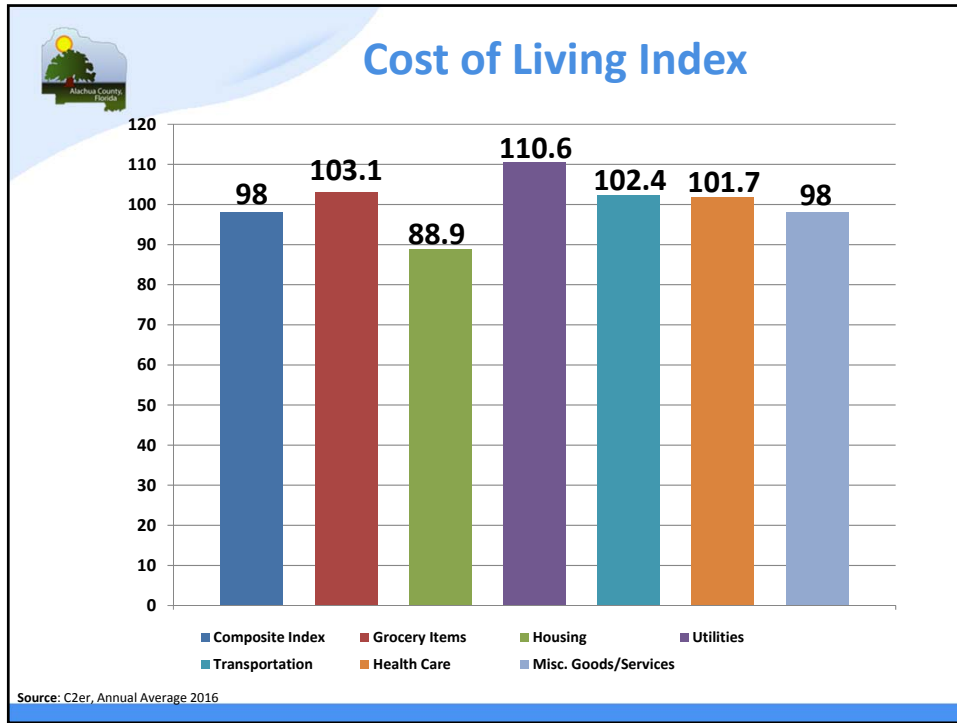
Source: U.S. Department of Labor, Bureau of Labor Statistic. Figures as of December 2016

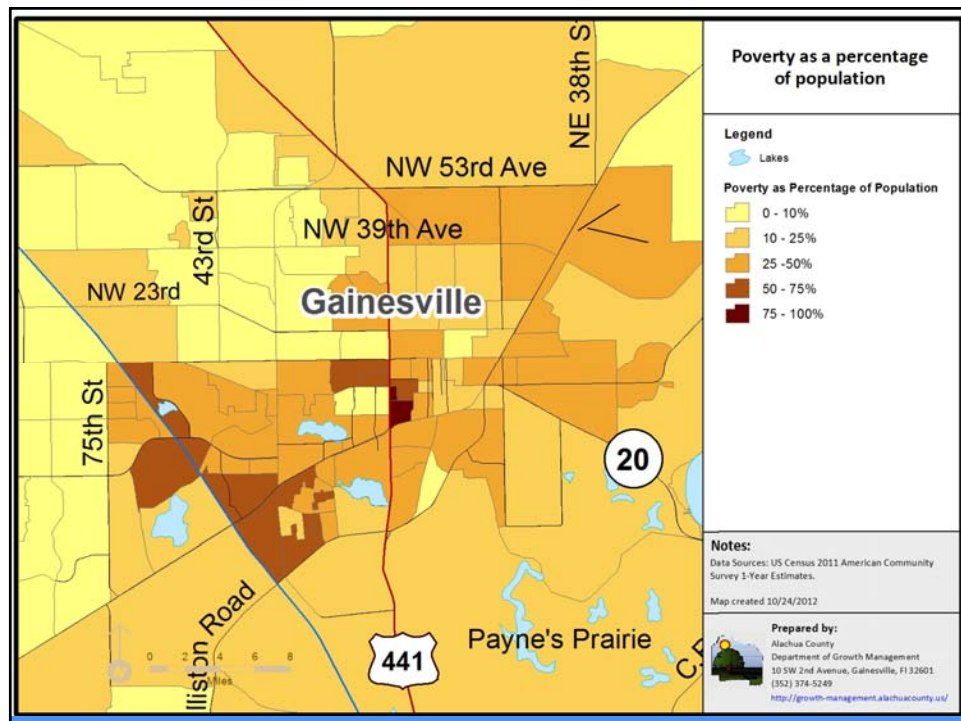
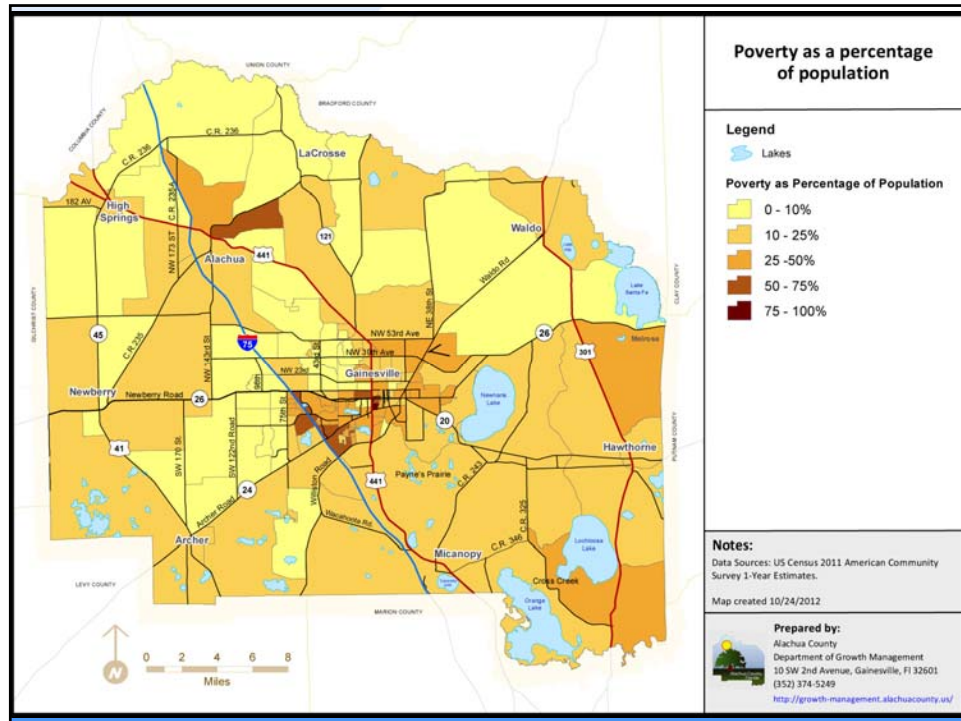


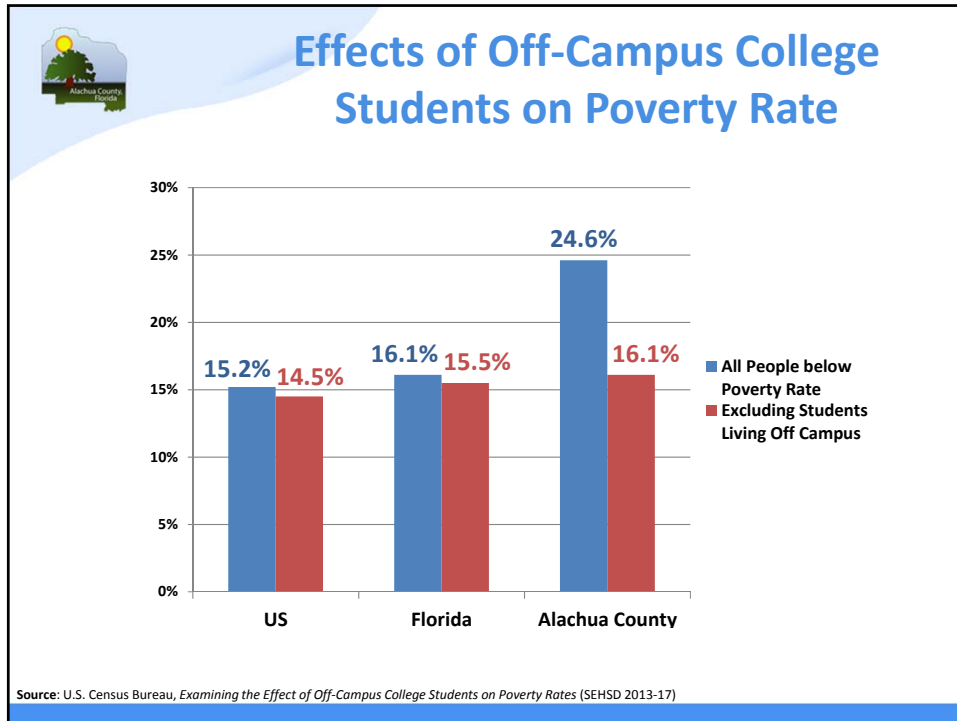
Economic Sector	Percentage
Government	31.22%
Education & Health Services	18.46%
Trade, Transportation, & Utilities	14.64%
Professional & Business Services	9.73%
Leisure & Hospitality	10.81%
Financial Activities	4.69%
Other Services	3.39%
Mining, Logging, & Construction	3.60%
Manufacturing	3.24%
Information	1.08%

Source: U.S. Department of Labor, Bureau of Labor Statistic. Figures as of December 2016.









Economic Development Responsibilities

- Businesses attraction 
- Business retention & expansion   
- Small business development   
- Entrepreneurship   
- Workforce development  
- Redevelopment & revitalization   

Business Resources Guide




The screenshot shows the Alachua County website with the following elements:


- Header:** Alachua County logo, "Alachua County .us", a search bar, and a "Select Language" dropdown.
- Navigation Bar:** Links for "How Can We Help You?", "County Offices", "Business Resources", and "Contact Us".
- Main Content Area:**
 - Left Column:** A smartphone displaying the "Alachua County Connects" app interface. Below it, a headline reads "County Launches Alachua County Connects: A Mobile Citizen Reporting Platform". Further down, a "Featured Story" section titled "Advisory Board Volunteers Needed" is visible.
 - Right Column:** A "News & Events" section with sub-links for "News", "Video", "Meetings", "Maps", and "Directory". It includes a "Media Releases" section with a "Community Update" and a "Subscribe" button. A featured image shows a field with hay bales, with text below it: "Alachua County Rural Concerns Advisory Committee Vacancies" and "March Commercial Horticulture Programs".

www.alachuacounty.us

Contact Information

Edgar Campa-Palafox
Economic Development Coordinator

 (352) 264-6908

 ecp@alachuacounty.us